



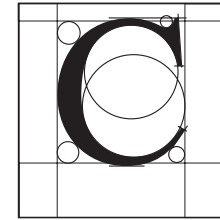
OUR FUTURE IS RENEWED WITH GRADUATE PROGRAM STRENGTH:

“The departments within the College of Science must strive to be research departments of national and international stature, while maintaining a strong commitment to the teaching of mathematics and science necessary to supply the needs of a scientifically trained workforce and a technologically literate populace. We believe graduate degrees will be increasingly important to prepare students for the workplace and the graduate programs in the College of Science will need to be strengthened and expanded.”

College of Science, Vision for *Southern at 150*



OFFER PROGRESSIVE GRADUATE EDUCATION



Current trends suggest that the 21st century will be one of graduate and professional education as Illinois moves into a global, knowledge-based economy. Southern Illinois University Carbondale must advance its commitment to graduate and professional education to make this University distinctive. We are classified as a Carnegie Doctoral/Research Extensive university, placing us in an exclusive group of national universities. We must not merely maintain this status. The University must continue to build on this strong foundation to remain a leader in local, regional, national, and global affairs.

Benefiting from the opportunities to be an active participant in faculty research, our graduate and professional students will be able to further develop expertise in their chosen areas of interest through extensive involvement in research. Faculty will be encouraged to pursue research and research funding with consideration given to the potential for enhancing the graduate and professional experience. Interdisciplinary research is also believed to be of great value in developing a variety of skills that will add value to graduate and professional training.

The demographic characteristics of graduate and professional students are constantly evolving, and we must seek to meet the educational needs of groups that do not fit the traditional student model. The University and the faculty will continuously seek new instructional modes for the delivery of graduate and professional programs. The format, time of delivery, and the methods of instruction must be made more flexible.

Aspiration: Achieve Excellence in Graduate and Professional Programs

The University’s ability to attract high-quality graduate and professional students and faculty depends upon offering nationally and internationally recognized Ph.D., master’s, and certificate programs that make us distinctive. The University must continue to build on and strengthen



SOUTHERN
AT 150

SOUTHERN AT 150 PROJECT
SOUTHERN ILLINOIS UNIVERSITY CARBONDALE
CARBONDALE, ILLINOIS
FINAL DRAFT

its foundation of graduate and professional programs. The University must provide an environment that supports the intellectual development of graduate and professional students, enabling them to perform at their optimum level, and preparing them for distinguished careers.

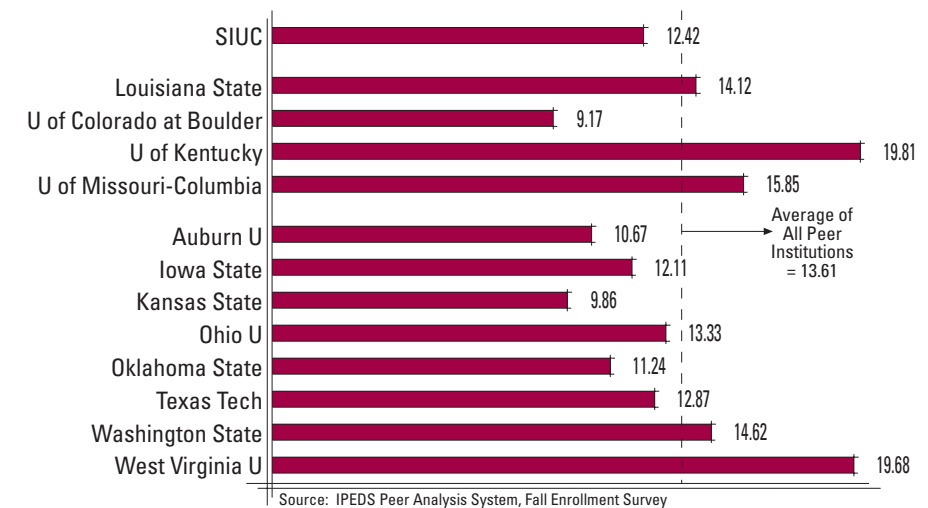
Targets:

- **Provide additional resources to enhance and/or develop an array of graduate programs at the master’s level**, focusing on programs in high demand. Double the number of students enrolled in master’s programs.
- **Maintain an appropriate balance of Ph.D. programs** and provide additional resources to strengthen Ph.D. programs in high demand or with national preeminence.
- **Increase by 100 percent the number of qualified applicants for graduate study.**
- **The University must continually assess the academic strength and reputation of the graduate and professional program inventory as a whole.** Weak or unproductive graduate degree programs should be identified and actions taken to strengthen or eliminate programs through a collaborative shared governance process.
- **Communicate the value of graduate and professional education, and the successes of our students.** Focus on the unique contributions of graduate and professional education to the economy and quality of life of the region, state, nation, and world.

Aspiration: Acquire Funding to Recruit and Retain Graduate Students

The University must enhance efforts to recruit and retain a diverse group of the best students for our graduate and professional programs from throughout the region, the nation, and the world. This effort will require developing close contacts with other colleges and universities that provide students for our programs, especially those in our geographic region, by aggressively marketing our programs, and offering increased financial support for students. By 2019, 25 percent of our total enrollment will be graduate students.

GRADUATE STUDENTS AS A PERCENT OF FULL-TIME STUDENTS, FALL 1999



Targets:

- **Secure funding so that a minimum 75 percent of our full-time graduate and professional students are on graduate assistantships or fellowships.** Assistantship and fellowship stipends must be competitive with aspirational peer institutions.
- **Double the number and dollar amount of graduate student stipends**, as well as support for other research professionals and post-doctoral personnel. An endowment of \$20M devoted to graduate student support should be established within five years.
- **Match peer institutions in major external scholarships awarded to our students.**
- **Allocate a portion of all increases in graduate tuition to graduate student scholarships.** In time, more of these scholarships should be funded by private donations.

